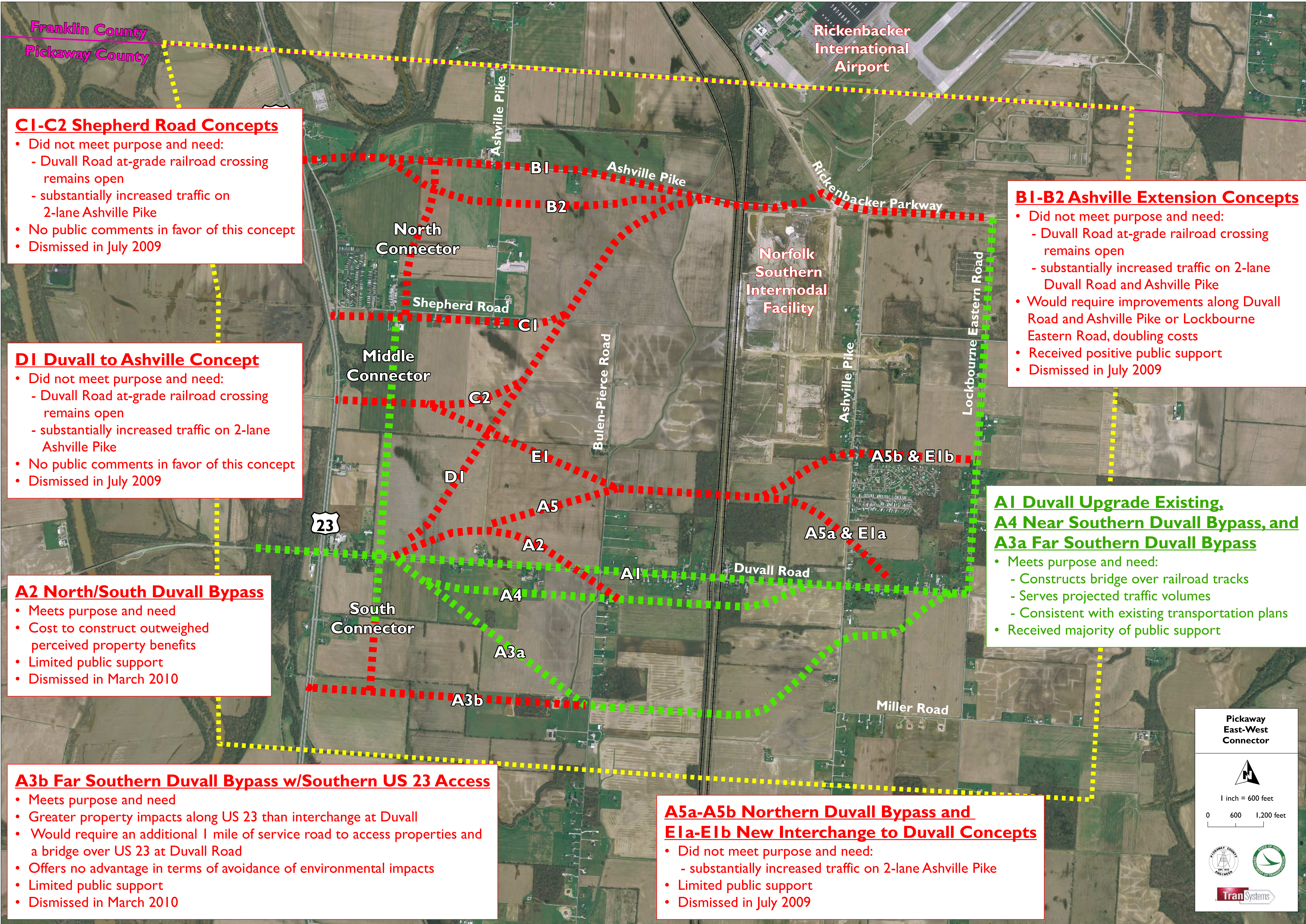


Concepts Studied



CI-C2 Shepherd Road Concepts

- Did not meet purpose and need:
 - Duvall Road at-grade railroad crossing remains open
 - substantially increased traffic on 2-lane Ashville Pike
- No public comments in favor of this concept
- Dismissed in July 2009

D1 Duvall to Ashville Concept

- Did not meet purpose and need:
 - Duvall Road at-grade railroad crossing remains open
 - substantially increased traffic on 2-lane Ashville Pike
- No public comments in favor of this concept
- Dismissed in July 2009

A2 North/South Duvall Bypass

- Meets purpose and need
- Cost to construct outweighed perceived property benefits
- Limited public support
- Dismissed in March 2010

A3b Far Southern Duvall Bypass w/Southern US 23 Access

- Meets purpose and need
- Greater property impacts along US 23 than interchange at Duvall
- Would require an additional 1 mile of service road to access properties and a bridge over US 23 at Duvall Road
- Offers no advantage in terms of avoidance of environmental impacts
- Limited public support
- Dismissed in March 2010

B1-B2 Ashville Extension Concepts

- Did not meet purpose and need:
 - Duvall Road at-grade railroad crossing remains open
 - substantially increased traffic on 2-lane Duvall Road and Ashville Pike
- Would require improvements along Duvall Road and Ashville Pike or Lockbourne Eastern Road, doubling costs
- Received positive public support
- Dismissed in July 2009

A1 Duvall Upgrade Existing, A4 Near Southern Duvall Bypass, and A3a Far Southern Duvall Bypass

- Meets purpose and need:
 - Constructs bridge over railroad tracks
 - Serves projected traffic volumes
 - Consistent with existing transportation plans
- Received majority of public support

A5a-A5b Northern Duvall Bypass and E1a-E1b New Interchange to Duvall Concepts

- Did not meet purpose and need:
 - substantially increased traffic on 2-lane Ashville Pike
- Limited public support
- Dismissed in July 2009

Pickaway East-West Connector

1 inch = 600 feet